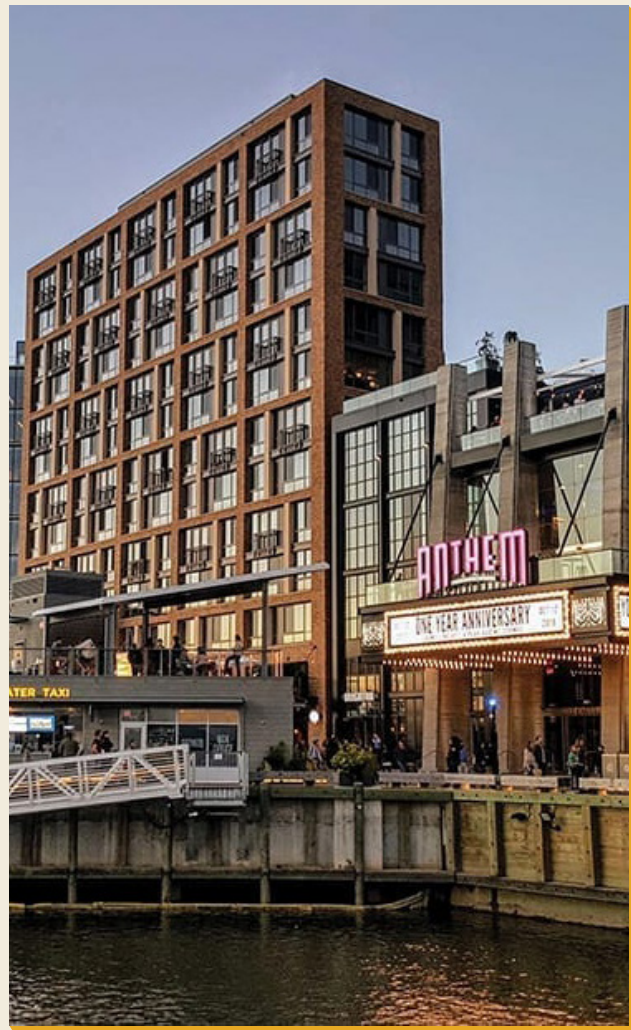
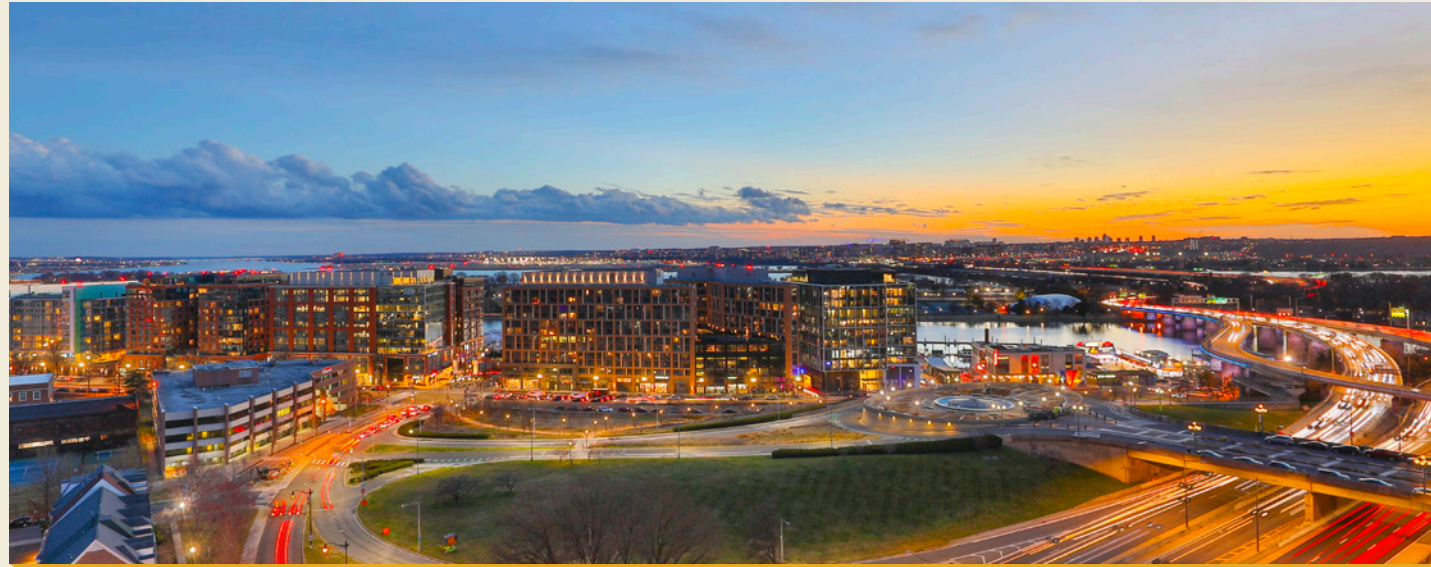


# 500

L'Enfant SW



# PROXIMITY TO THE WHARF WITHOUT THE PRICE TAG



# ACCESS + ACTIVITIES

L'ENFANT PLAZA METRO STOP



L'ENFANT PLAZA RETAIL



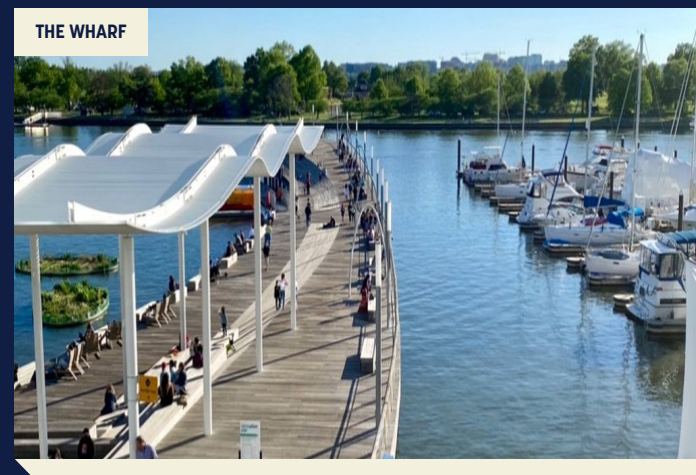
INTERNATIONAL SPY MUSEUM



ARTEHOUSE DC



THE WHARF



THE ANTHEM MUSIC VENUE



# 10<sup>TH</sup> FLOOR 2,362 TOTAL RSF

## DESIGN HIGHLIGHTS

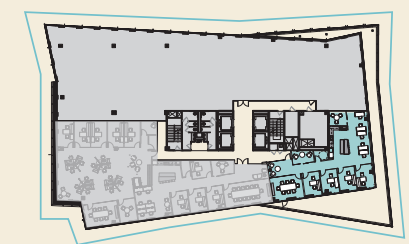
- HIGH CEILINGS AND FLOOR-TO-CEILING WINDOWS OFFER PANORAMIC VIEWS AND ABUNDANT NATURAL LIGHT
- VIRTUALLY COLUMN-FREE FLOORPLATES
- ICONIC TROPHY OFFICE ASSET WITH EXCEPTIONAL VISIBILITY OVERLOOKING THE POTOMAC RIVER AND SOUTHWEST WATERFRONT



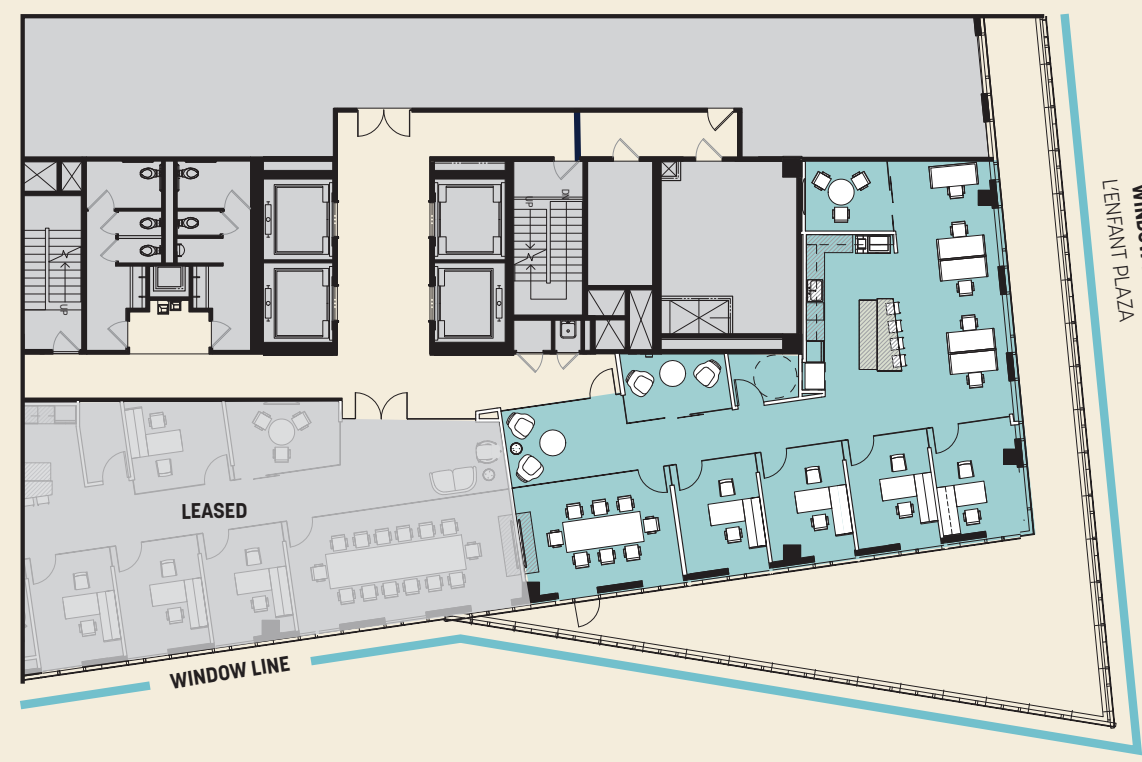
## PROGRAM DETAILS

- 4 OFFICES
- 5 WORKSTATIONS
- 1 LARGE CONFERENCE
- 1 HUDDLE ROOMS
- 1 PANTRY
- 1 PHONE ROOM

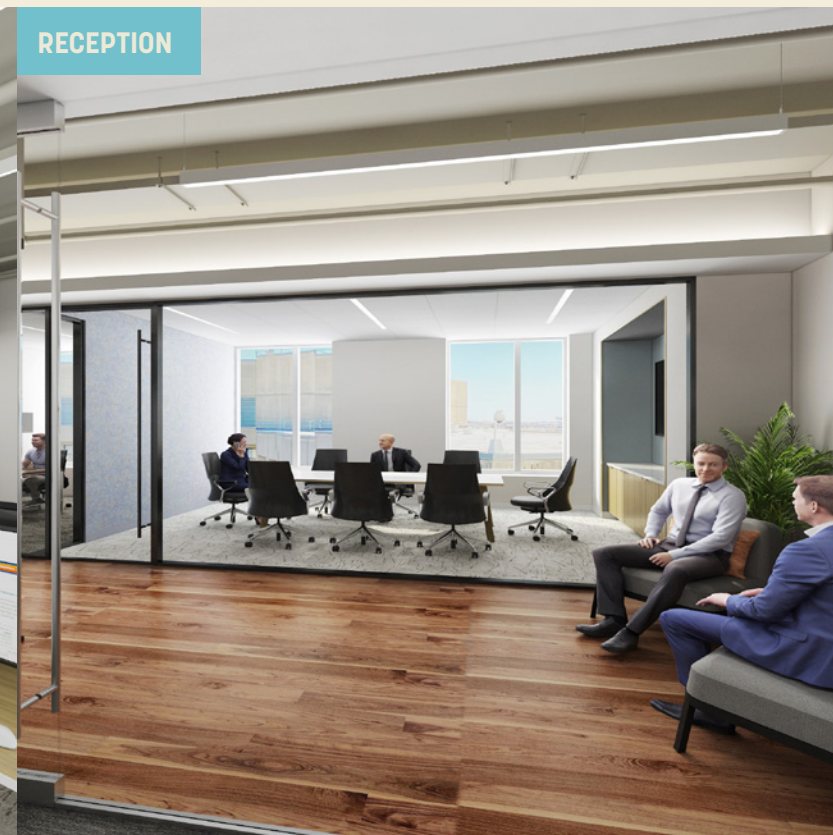
# SUITE C 2,362 RSF



PLAN KEY



PANTRY



RECEPTION

## ROOFTOP EXPERIENCE

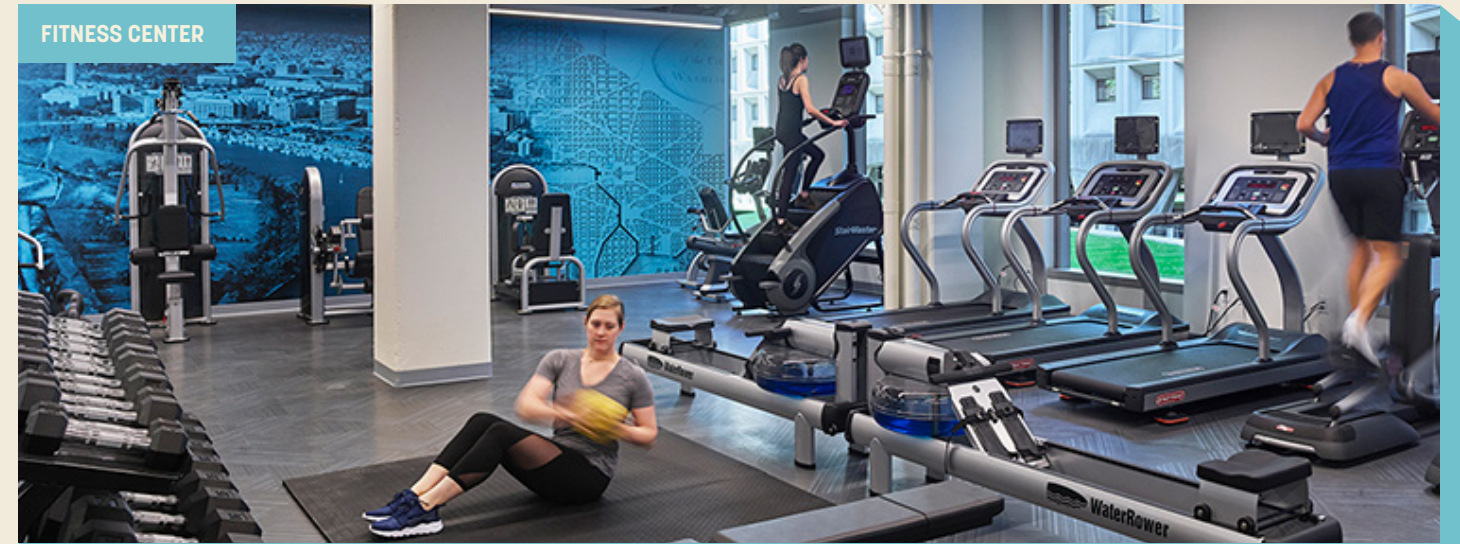


## DESIGNED WITH EFFICIENCY

2-STORY LOBBY ENTRY



FITNESS CENTER



# 500

L'Énfant SW

For leasing information, please contact

**Evan Behr**

evan.behr@am.jll.com  
202 258 3738

**Doug Mueller**

doug.mueller@am.jll.com  
202 441 1442

**Jeanette Ko**

jeanette.ko@am.jll.com  
703 332 9068

**Thomas Myers**

thomas.myers@am.jll.com  
202 812 2166

